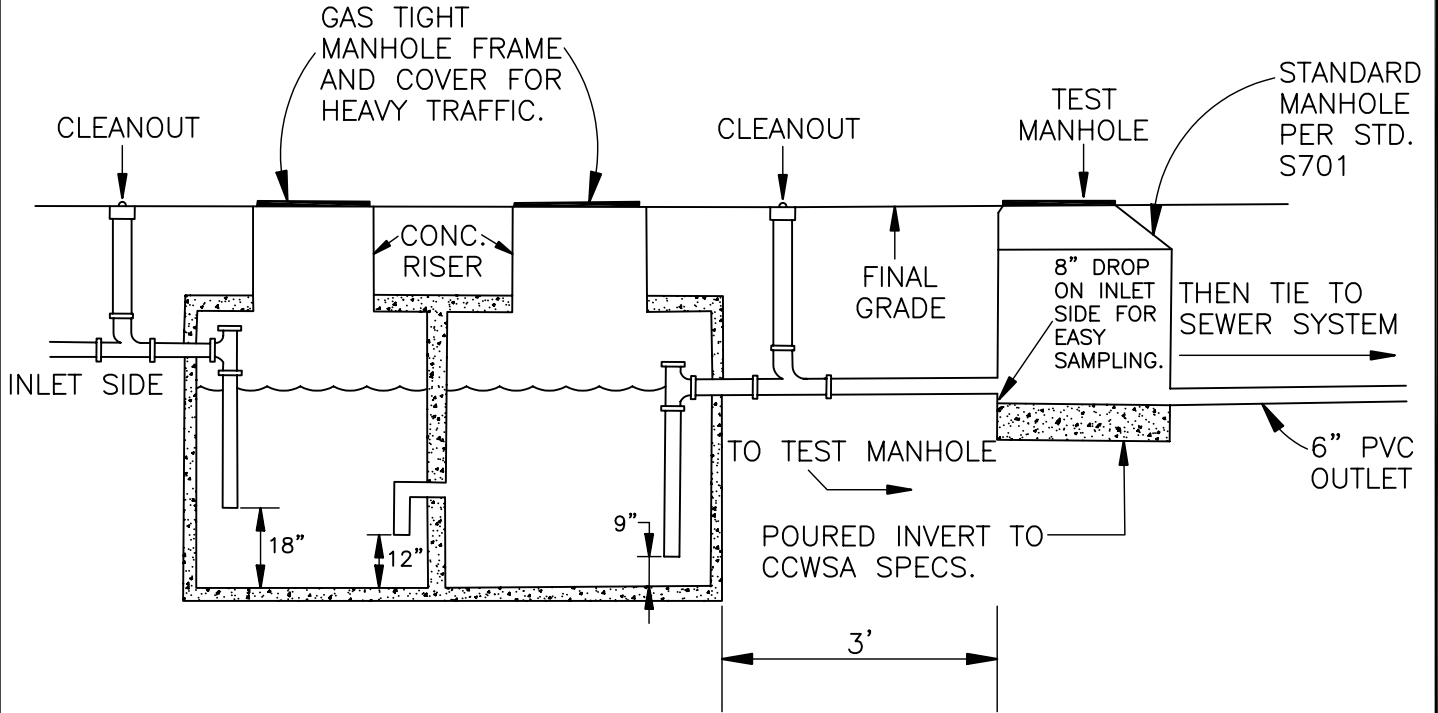


CCWSA STANDARD 1500 GALLON GREASE TRAP



NOTES:

1. MIN. OF 4" PVC PIPING FROM BUSINESS TO TEST MANHOLE.
2. MIN. SIZE: 1,500 GALLONS
3. SIZE AND DIMENSIONS OF GREASE TRAP AND PIPING DEPENDENT ON FLOW FROM RESTAURANT. DESIGNER SHALL SUBMIT CALCULATIONS TO SUPPORT DESIGN SIZE.
4. ONLY THE FLOW FROM THE TRAP IS ALLOWED TO ENTER THE TEST MANHOLE.
5. ALL DUMPSTERS MUST BE ROUTED THROUGH THE INLET SIDE OF THE GREASE TRAP.
6. NO RESTROOM SEWAGE IS ALLOWED TO FLOW THROUGH THE GREASE TRAP.

**CHEROKEE COUNTY
WATER & SEWERAGE
AUTHORITY**

**TYPICAL
GREASE TRAP**

CONSTRUCTION STANDARD

DATE: FEB. '03

APPROVED:

STANDARD
NO.

S727