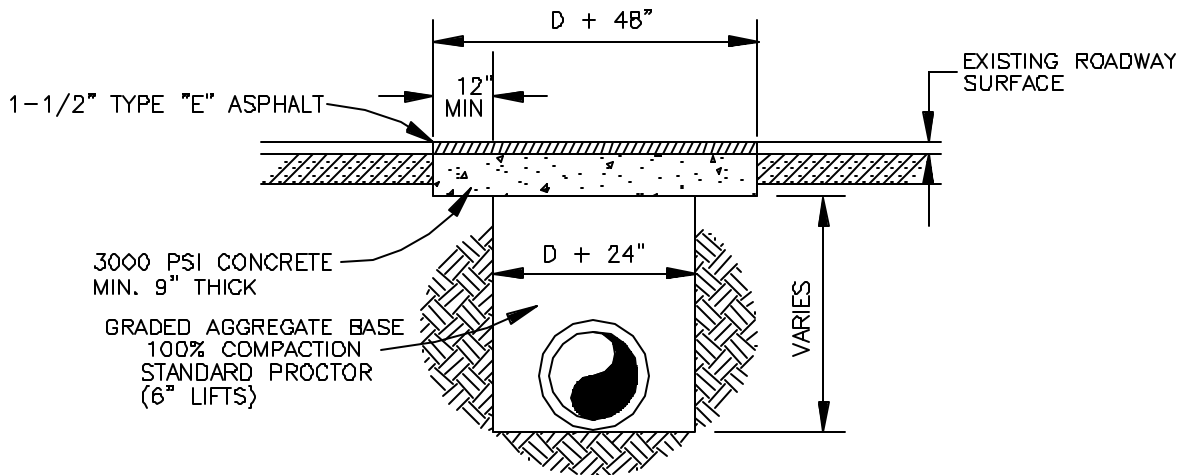


STATE OR STATE-AID ROADS



NOTES:

1. PERMISSION MUST BE OBTAINED FROM CHEROKEE COUNTY TO OPEN CUT EXISTING ROADS.
2. ROADWAYS WILL GENERALLY BE BORED OR TUNNELED FROM DITCH LINE TO DITCH LINE.
3. IF CONCRETE PAVEMENT, REPLACE WITH ORIGINAL THICKNESS (MINIMUM 8"), FLUSH WITH EXISTING PAVEMENT.

COUNTY ROADS

**CHEROKEE COUNTY
WATER & SEWERAGE
AUTHORITY**

**TYPICAL STREET
CUT REPAIR**
CONSTRUCTION STANDARD

DATE: FEB. '03

APPROVED:

STANDARD
NO.
S724