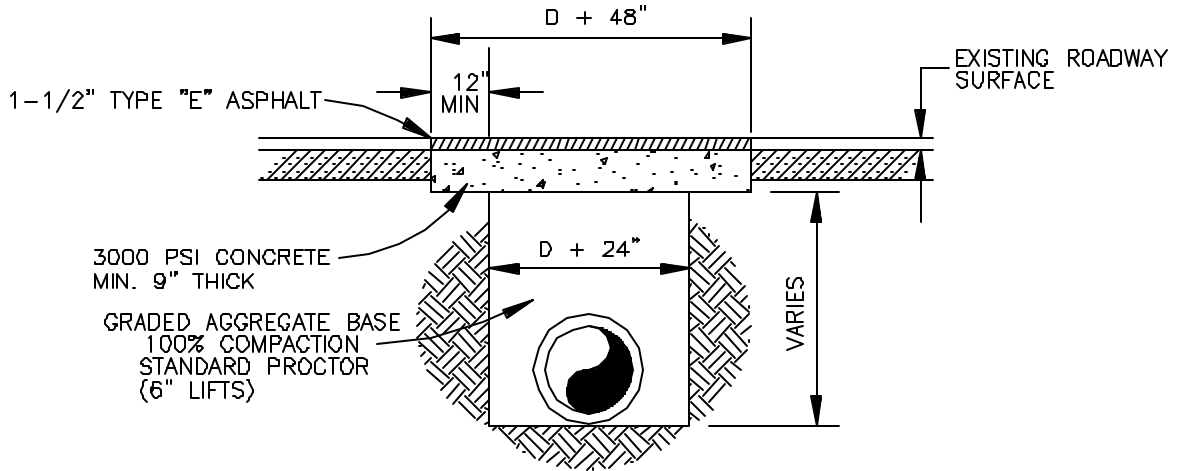


## STATE OR STATE-AID ROADS



**NOTES:**

1. PERMISSION MUST BE OBTAINED FROM CHEROKEE COUNTY TO OPEN CUT EXISTING ROADS.
2. ROADWAYS WILL GENERALLY BE BORED OR TUNNELED FROM DITCH LINE TO DITCH LINE.
3. IF CONCRETE PAVEMENT, REPLACE WITH ORIGINAL THICKNESS (MINIMUM 8"), FLUSH WITH EXISTING PAVEMENT.

## COUNTY ROADS

**CHEROKEE COUNTY  
WATER & SEWERAGE  
AUTHORITY**

**TYPICAL STREET  
CUT REPAIR**  
CONSTRUCTION STANDARD

DATE: FEB. '03

APPROVED:

STANDARD NO.  
**W721**