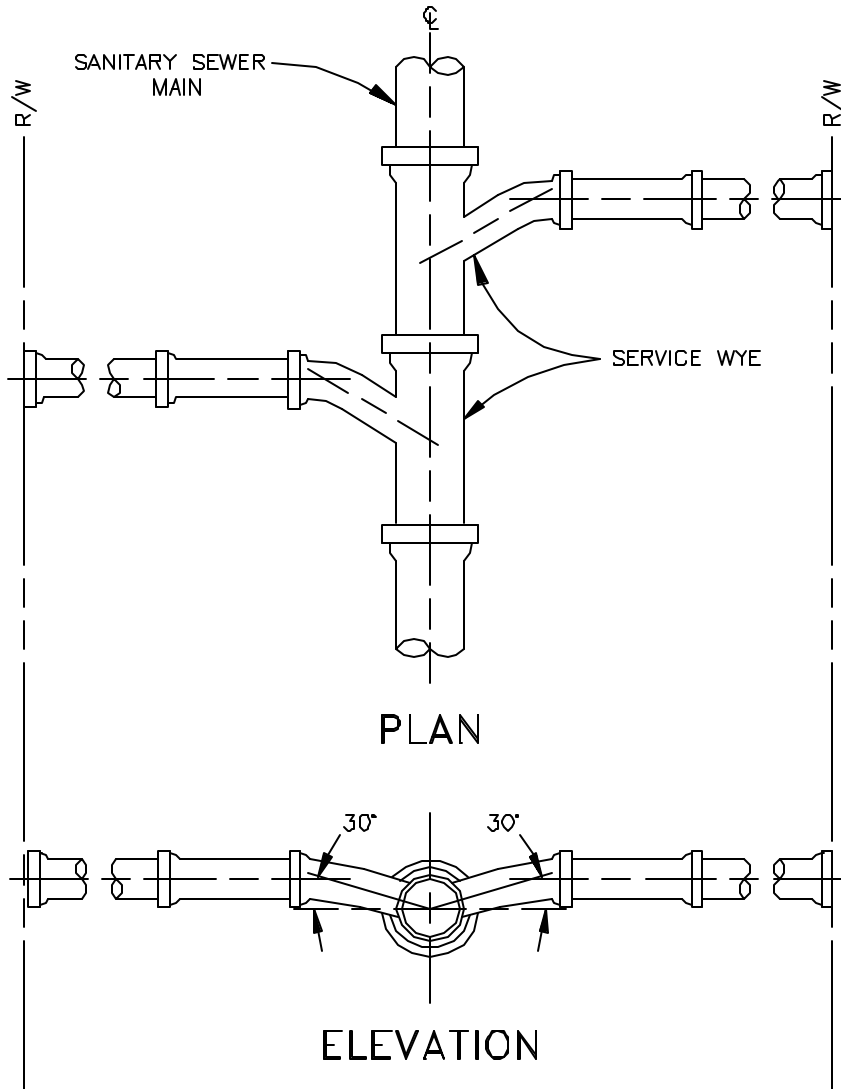


NOTE:

1. SEWER LATERAL TO BE LOCATED 10 FEET FROM THE SIDE LOT LINE ON THE DOWNSTREAM SIDE OF THE SANITARY SEWER.
2. MIN. SLOPE OF 1% REQ'D. FOR 6" SERVICE.



SEWER SERVICE LATERAL

CHEROKEE COUNTY
WATER & SEWERAGE
AUTHORITY

SEWER SERVICE
LATERAL
CONSTRUCTION STANDARD

DATE: FEB. '03

APPROVED:

STANDARD
NO.
S711