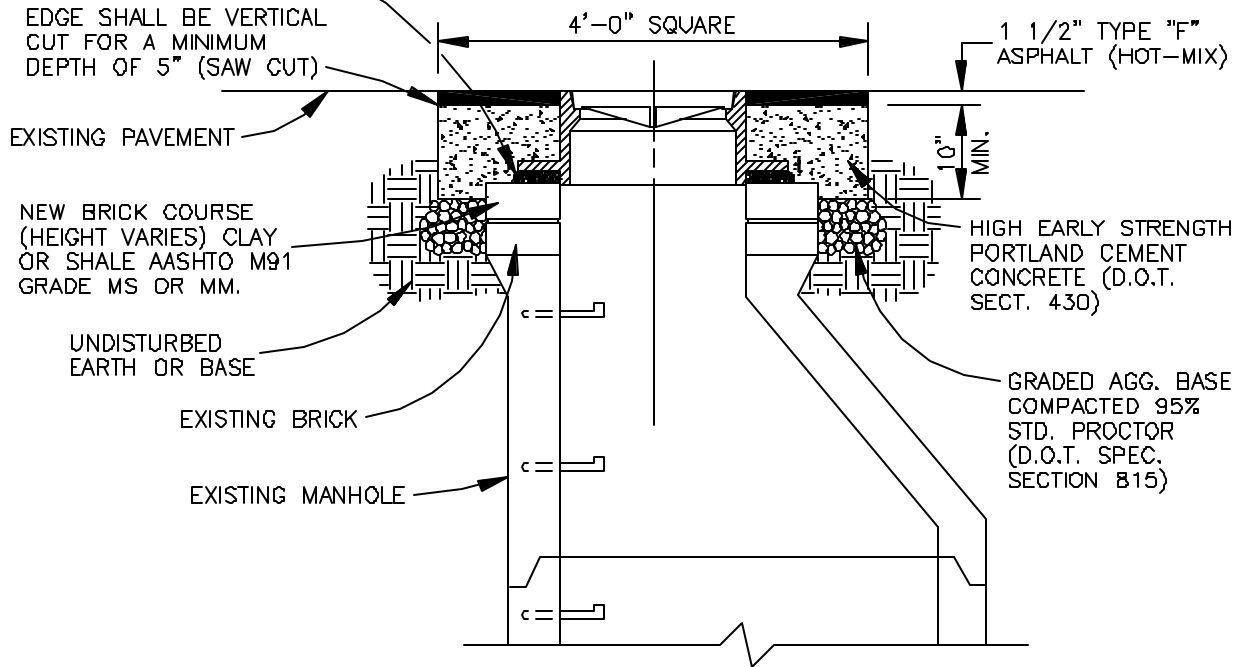


PLACE FOUR STEEL SHIMS (4" X 2") EQUALLY SPACED AROUND BOTTOM OF MH FRAME. THICKNESS SHALL BE AS REQUIRED TO MAKE COVER FLUSH WITH PAVEMENT. SURROUND SHIMS WITH CEMENT. WHEN THICKNESS IS LESS THAN 1/2", USE CONCRETE MORTAR INSTEAD. WHEN THICKNESS IS GREATER THAN 2", USE BRICKS. (NOT TO EXCEED 2 COURSES.)



## MANHOLE FRAME-GRADE ADJUSTMENT

NOTES:

1. PORTLAND CONCRETE FOR COLLAR SHALL BE A MIN. OF 10" THICK AND SHALL EXTEND FROM THE LAST FULL COURSE OF BRICK TO 1 1/2" BELOW THE EXISTING PAVEMENT.
2. THE CONTRACTOR HAS THE OPTION OF USING PORTLAND CONCRETE FOR THE FULL DEPTH (FROM THE ASPHALT TO UNDISTURBED EARTH) OR AS SHOWN ABOVE.
3. THE CONCRETE SHALL BE LEFT WITH A RAKED FINISH TO PROVIDE A ROUGH SURFACE FOR THE ASPHALT TO BOND TO BITUMINOUS TACK AND ASPHALT SHALL BE PLACED PER CURRENT D.O.T. SPECIFICATIONS.
4. STEEL PLATES MAY BE REQUIRED BY THE AUTHORITY IN HIGH TRAFFIC AREAS TO PROTECT THE FRESH CONCRETE FOR A MINIMUM OF 40 HOURS. IN THESE HIGH TRAFFIC AREAS BARRICADES, CONES, ETC. WILL NOT BE ALLOWED.
5. BEFORE WORKING IN AN AREA, THE CONTRACTOR SHALL NOTIFY THE AUTHORITY.

**CHEROKEE COUNTY  
WATER & SEWERAGE  
AUTHORITY**

**MANHOLE  
FRAME-GRADE  
ADJUSTMENT  
CONSTRUCTION STANDARD**

DATE: FEB. '03

APPROVED:

STANDARD  
NO.  
**S710**