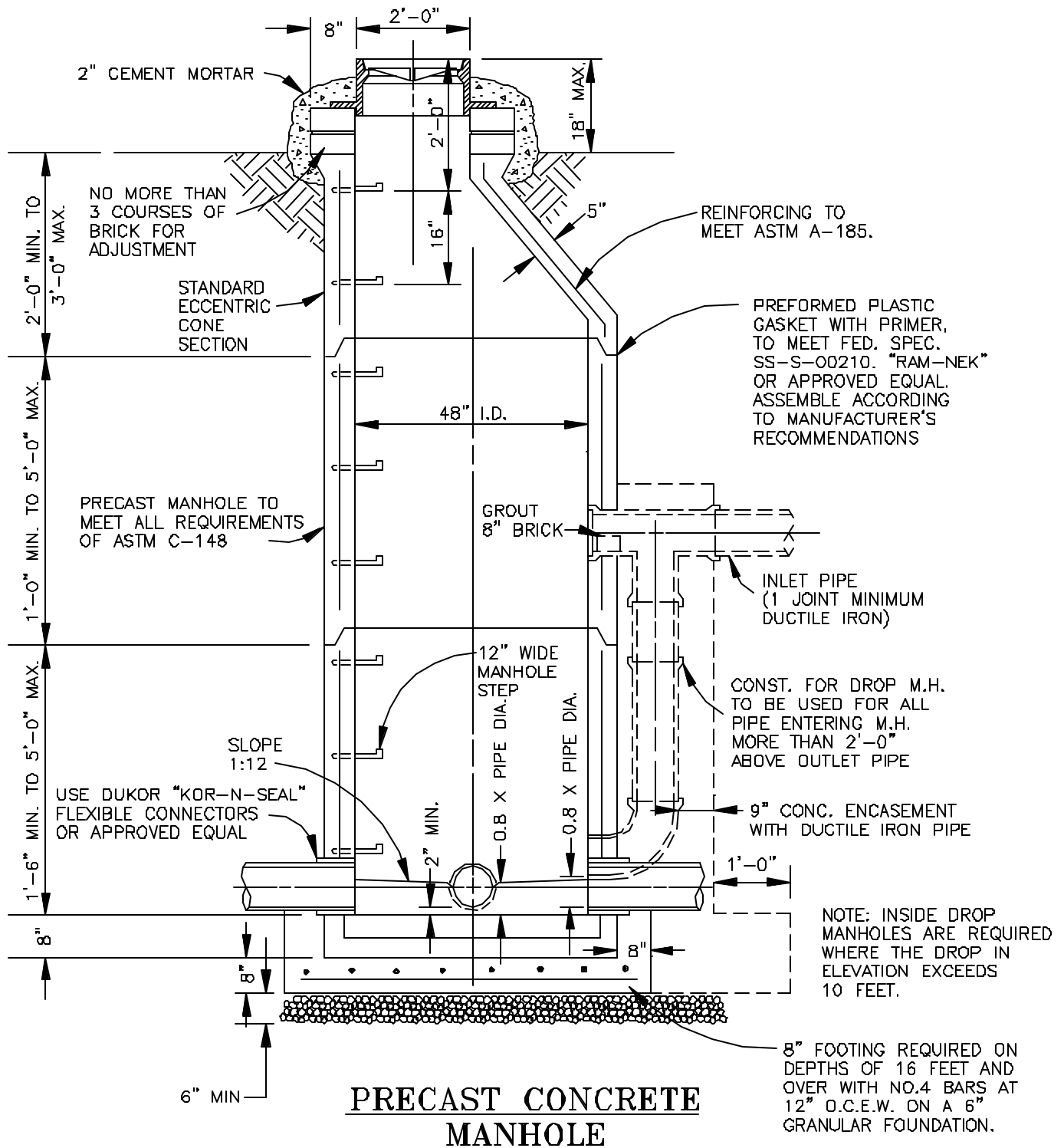


NOTES:

1. MANHOLE RIMS ARE TO BE FLUSH WITH PAVEMENT IN PAVED AREAS.
2. MANHOLE RIMS ON OUTFALL LINES ARE TO BE 18" ABOVE GROUND.
3. MANHOLE RIMS IN FUTURE STREETS ARE TO BE 48" ABOVE GROUND.
4. SEE DETAIL S704 REGARDING SAFETY PLATFORMS.
5. SEE DETAIL S730 REGARDING LAST MANHOLE ON SEWER LINE BEFORE A WET WELL.



**CHEROKEE COUNTY
WATER & SEWERAGE
AUTHORITY**

**PRECAST
CONCRETE
MANHOLE
CONSTRUCTION STANDARD**

DATE: FEB. '03

APPROVED:

STANDARD
NO.
S701